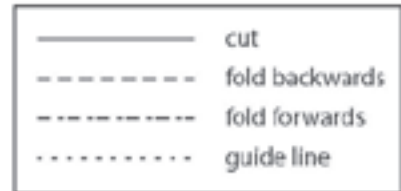


# Instructions for Polly

You will need:  
Craft knife & ruler / scissors  
Glue (eg UHU)



Score or crease all fold lines before glueing.

## Beak

1. Overlap and glue tabs [a] together. Put to one side.

## Legs

2. Glue tab [b] to the back of edge [b] on the front panel. Glue tab [c] to the back of flap [c].
3. Do the same for tabs [d] and [c].

## Body

4. Glue one side of the parrot to the front, starting at [e] and working your way down.
5. Do the same with the other side.
6. Glue tab [a] on the beak to the black triangle on the front panel.
7. Glue tabs [f] together.
8. Glue the back of the parrot on. Start at tab [f] on the beak and work down towards the wing at tab [g].
9. Glue tab [h] to the back (DON'T glue tab [i] - that's for later!).

## Wings

10. Overlap and glue the darts in each wing (using the guide lines). [j] curves forwards, [k] backwards.
11. On the white side, put glue round the edge of [j] and glue to [k]. [j] should be on the concave side of each wing.
12. Glue each wing onto the body: Insert the wing between the front and back "arms" of the parrot and glue.

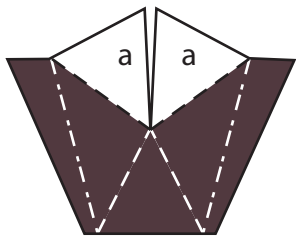
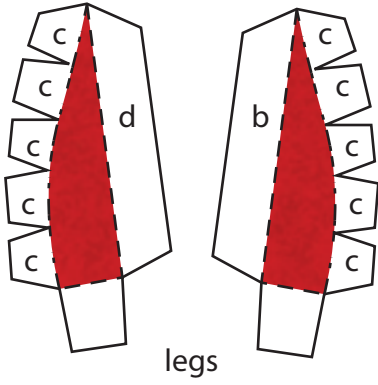
## Tail

13. Overlap and glue the darts in the tail pieces (using the guide lines). [m] curves out, [n] curves in.
14. Glue the coloured side of [m] to tabs [i] on the body.
15. Glue the lower back to [m].
16. On the white side, glue the edge of [n] and stick to [m], so that the lower back is sandwiched in between.

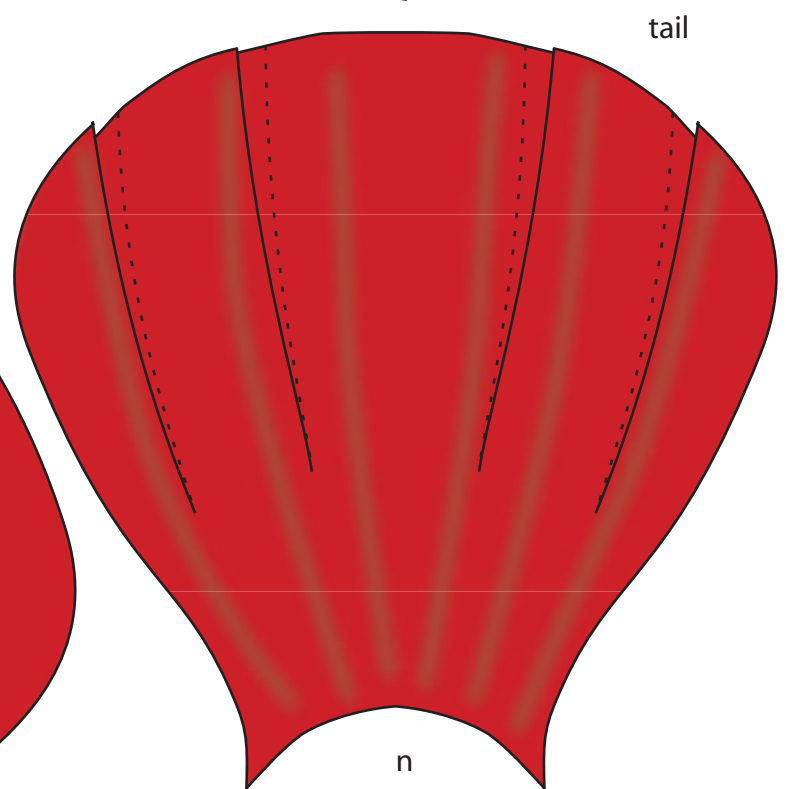
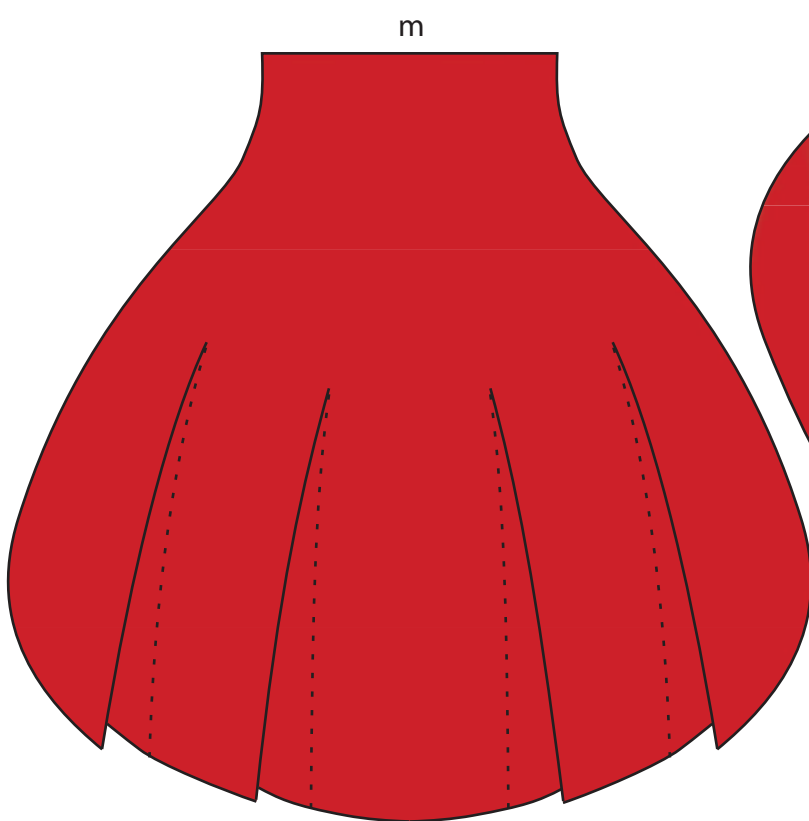
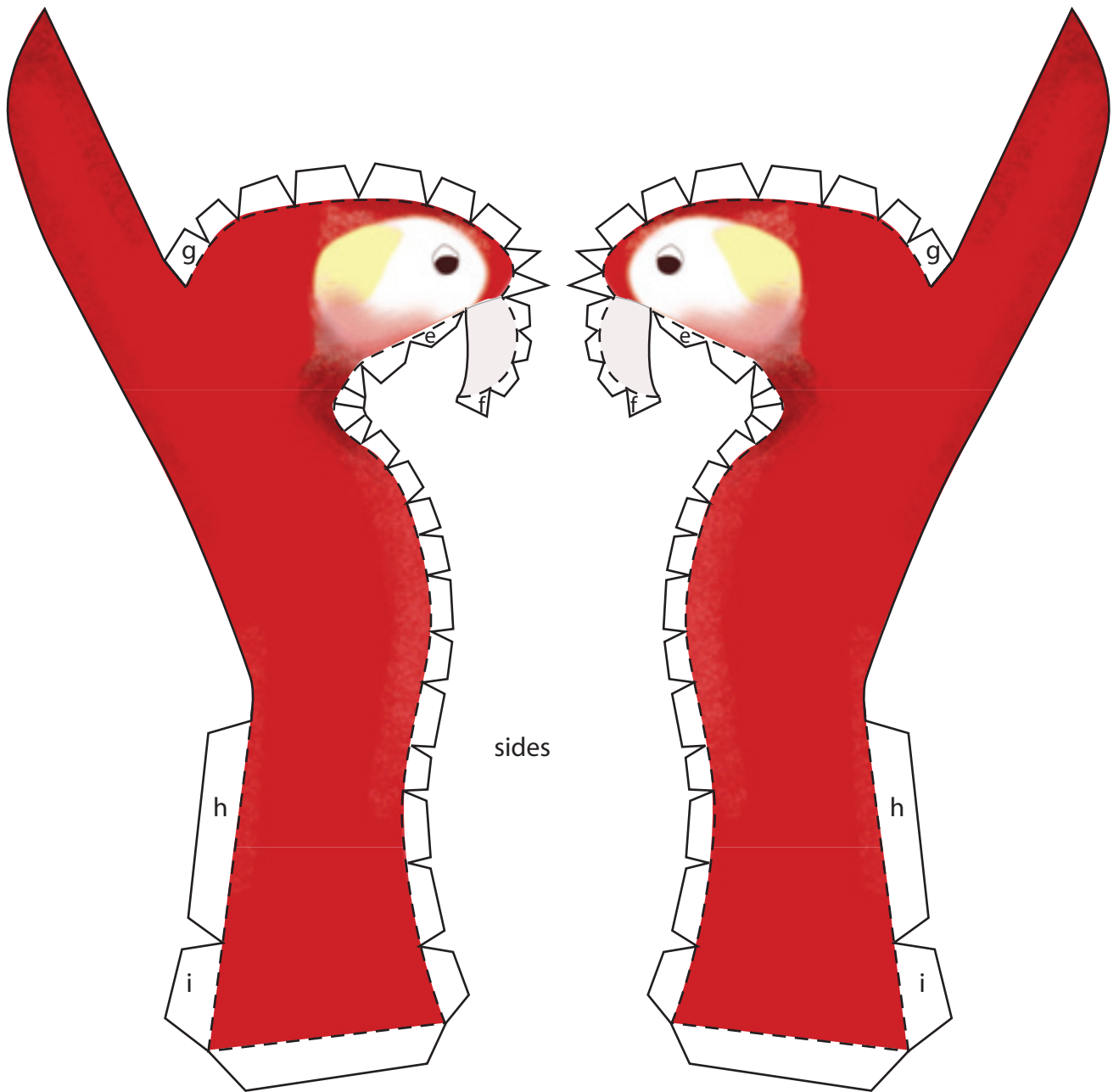
## Perch

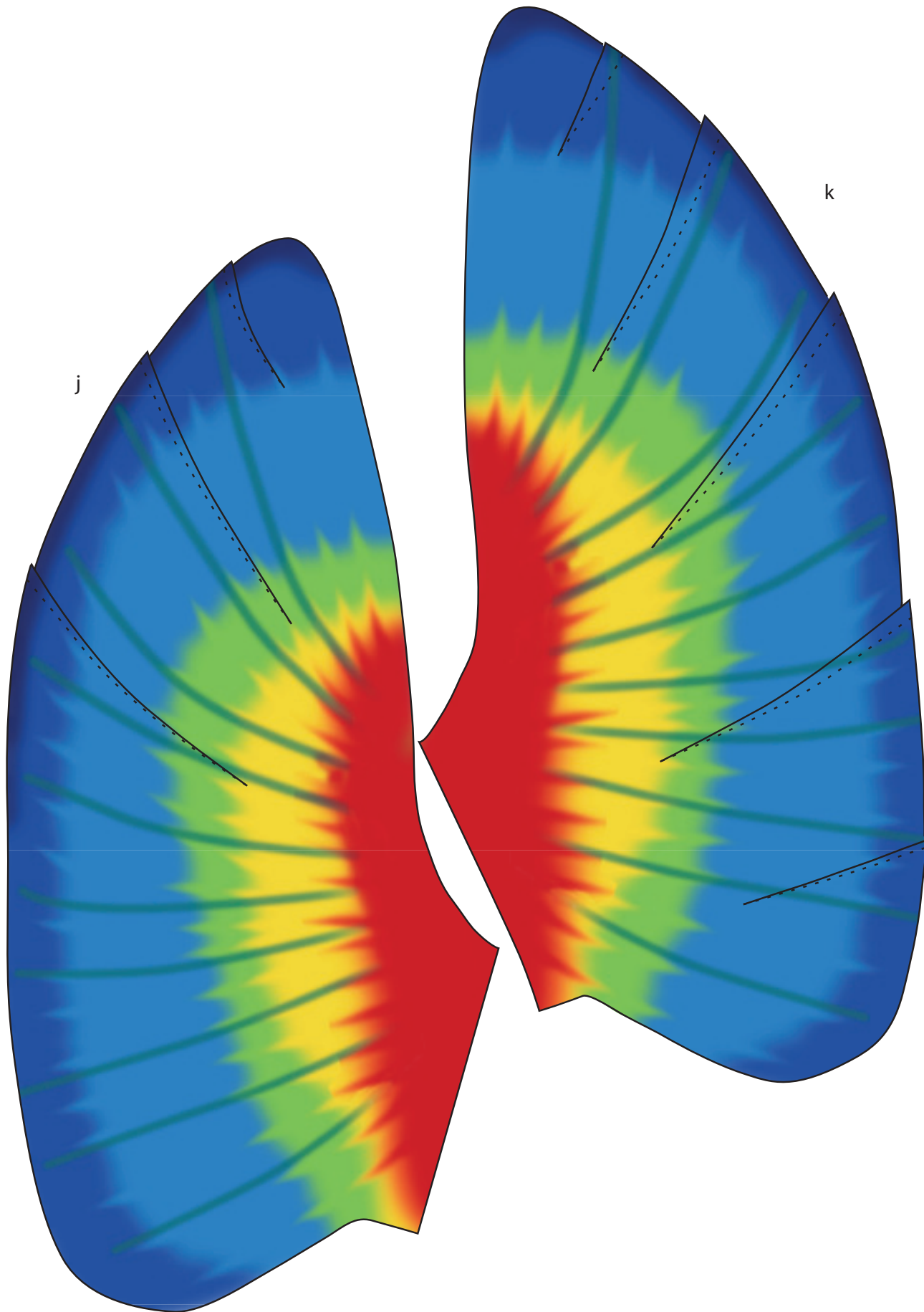
17. Glue [o] and [p] tabs to make the perch.
18. Glue tabs [q] to the nearby edges to make the plinth.
19. Place the perch through the hole in the plinth, and glue tabs [r] to the perch base.
20. Glue the bottom tabs of the parrot to the top of the perch.

—————	cut
- - - - -	fold backwards
- · - · -	fold forwards
· · · · ·	guide line

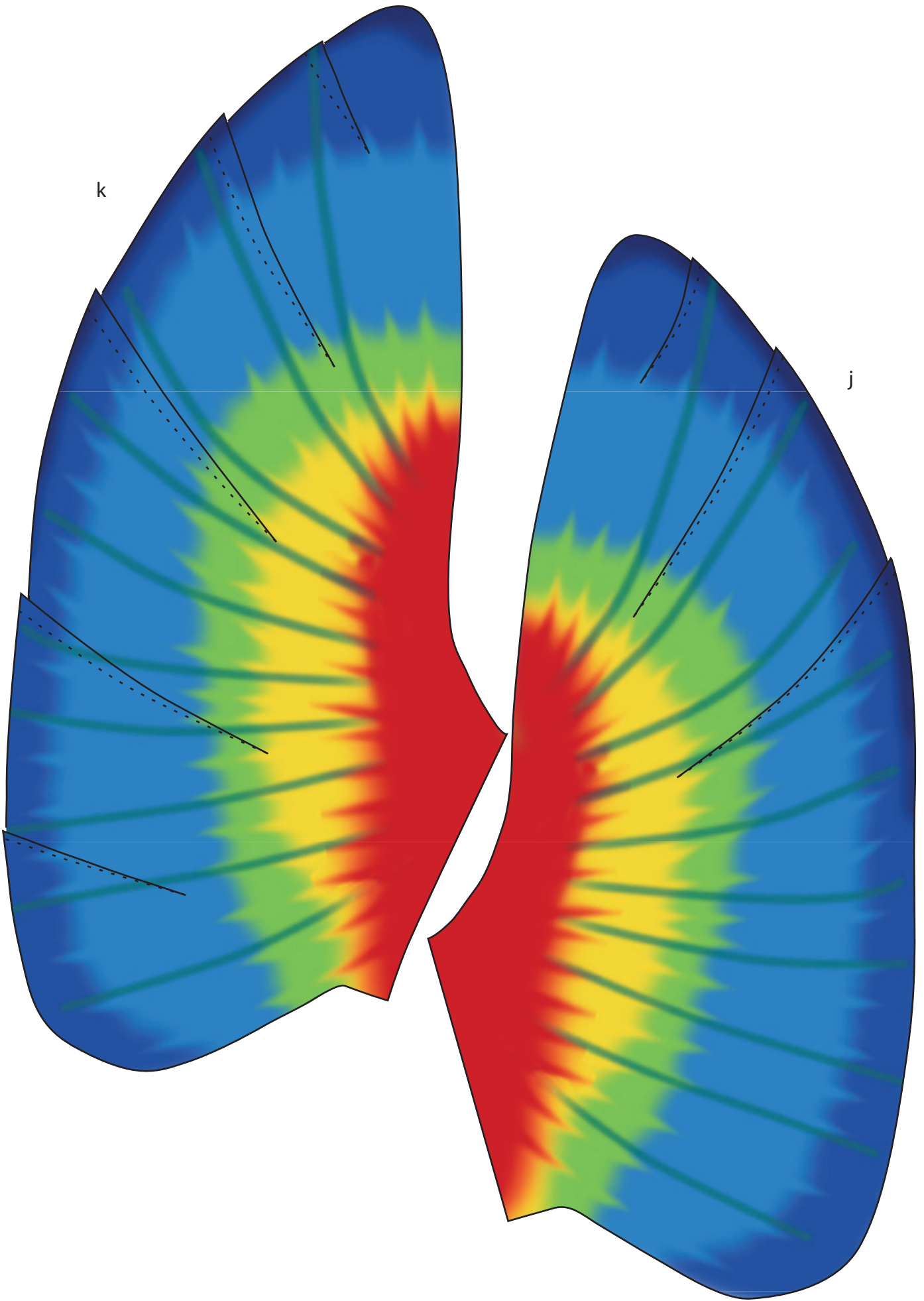


back





right wing



k

j

left wing

