

Instructions for 'Gala'

Score or crease all fold lines before gluing.

Key:

----- score / fold
 _____ cut

You will need:

Craft knife & ruler
 Glue (eg UHU)
 Sellotape
 A piece of thread

Wall

1. Glue the tabs in alphabetical order to create a wedge shape.
2. Stick the sky onto the back of the wedge on the right hand side (See image 1).

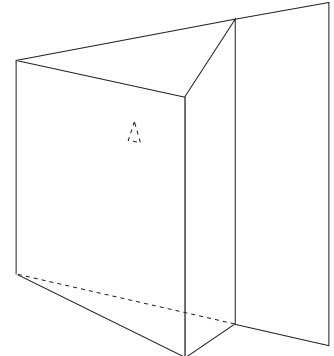


image 1

Lamp

3. Glue tabs [j] to the edges nearest them.
4. Glue tabs [k] together to form the box of the lamp.
5. Glue tabs [l] then fold round to form the top of the lamp.
6. Glue tabs [m] so that the top of the lamp rests over the body.
7. Curve all four sides of [n] down and fold the white tabs underneath (See image 2). Glue.
8. Follow step 7 for [o].
9. Glue [n] to the top of the lamp, and then [o] on top of [n].
10. Fold and glue [p], and affix to the top of [o]. Glue the label "25a" to the top of the lamp.



image 2

Arm

11. Make sure you cut and fold the right bits! Here's a wee diagram (image 3):

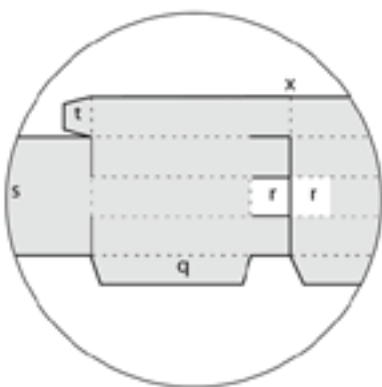


image 3

12. Glue tabs [q] to form two square rods. Fold along line x and glue the two squares [r] together.
13. The two blue tabs either side of [r] should be glued to the longer arm (so the arms form a right angle - see image 4).
14. Fold rectangle [s] over, and glue tabs [t] together.
15. Glue [u] into a loop and drop over the longer arm.
16. Glue the tabs [v] and slot the lamp onto the arm, making sure the lamp is centred.

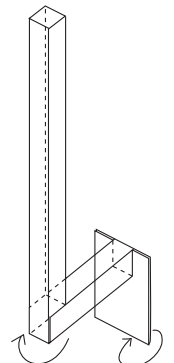
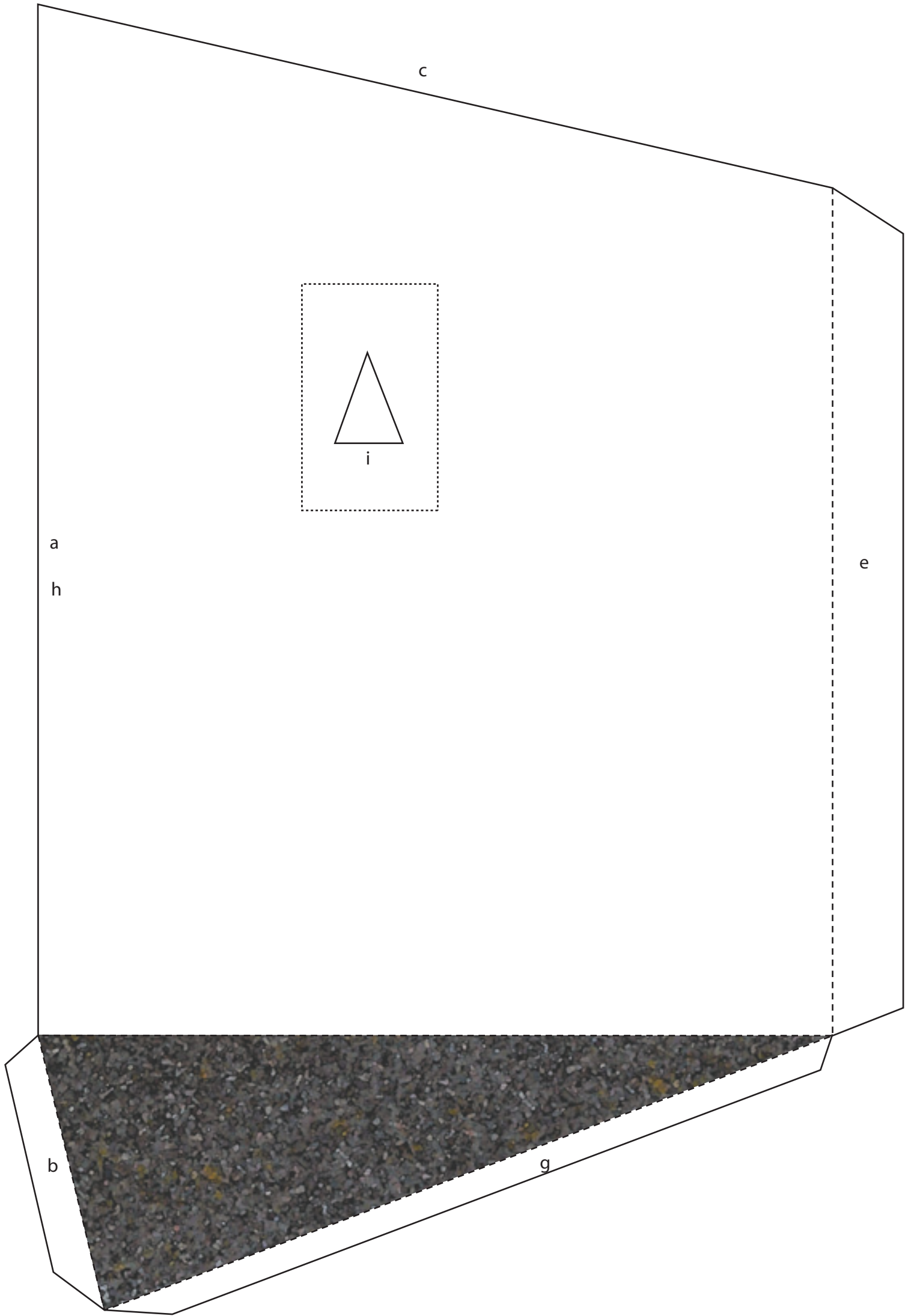


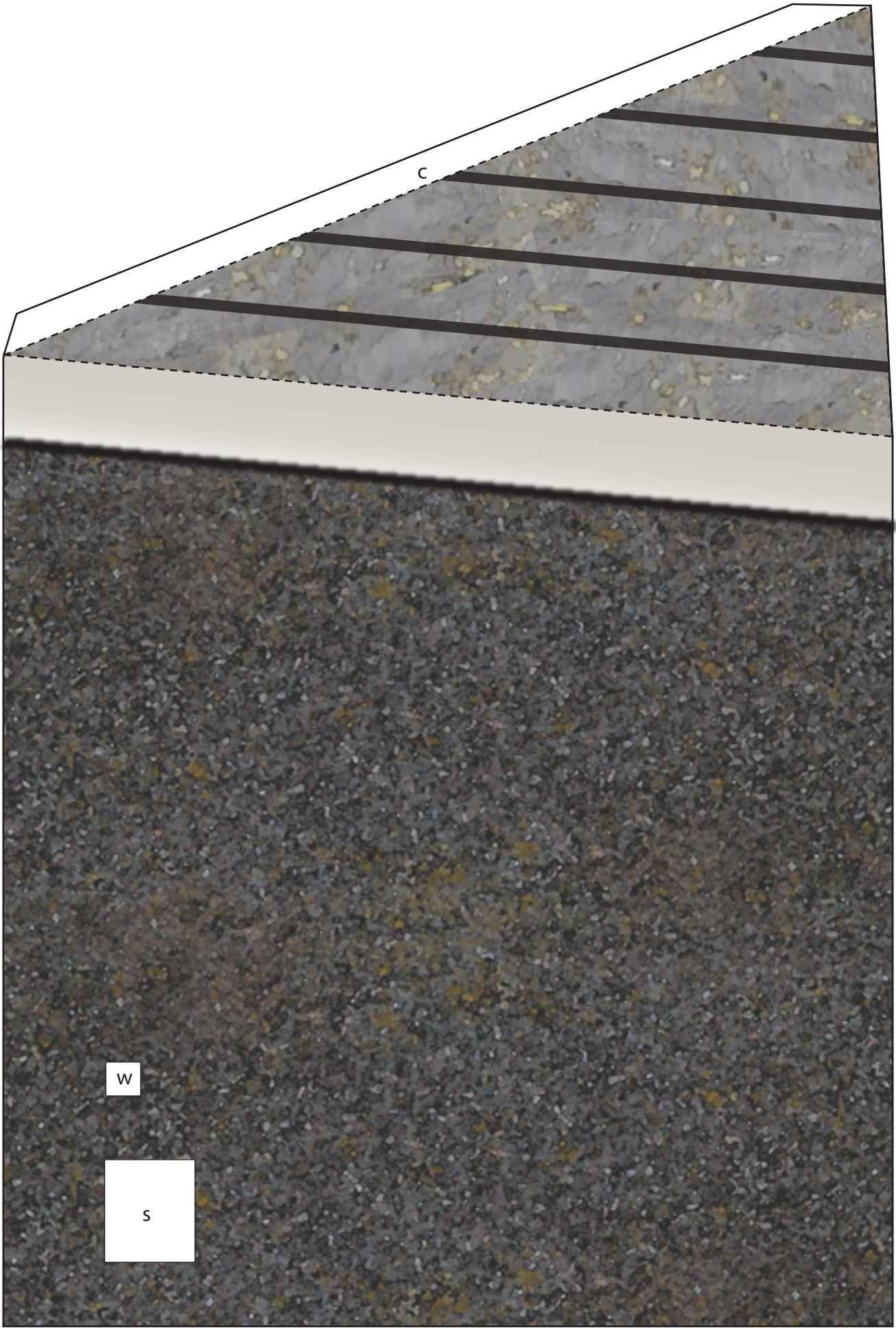
image 4

17. Glue [s] to the wedge shaped wall as indicated.

Bunting

18. Curl and bend the flags to give the impression of windiness, then glue them into the fold of strip [w].
19. Glue [w] to the wall as indicated, so it's angled diagonally upwards.
20. Tie a piece of thread around the loose end of the bunting. Tape the thread to the back of the wall so the bunting hangs at a jaunty angle.





c

d

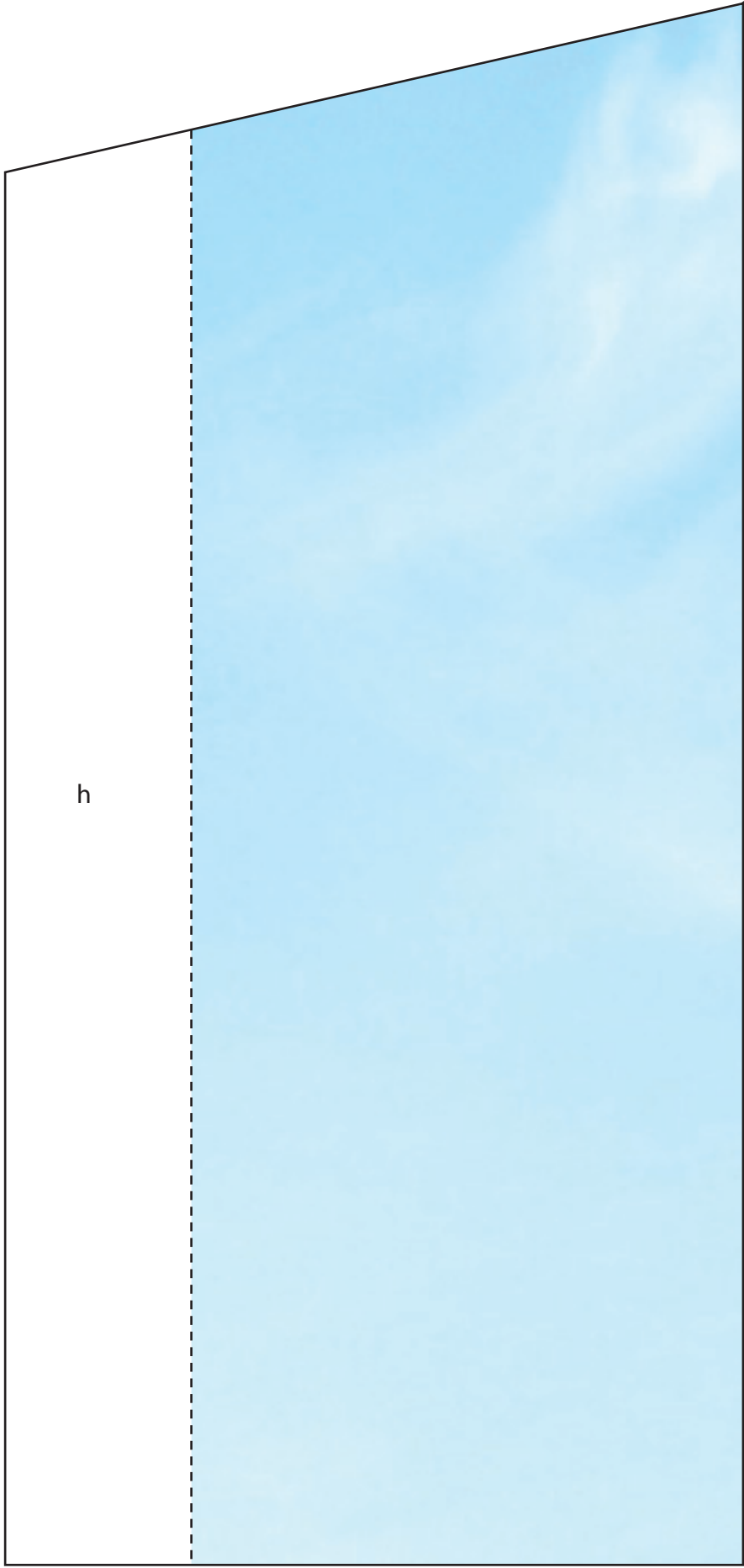
e

f

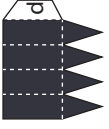
w

s

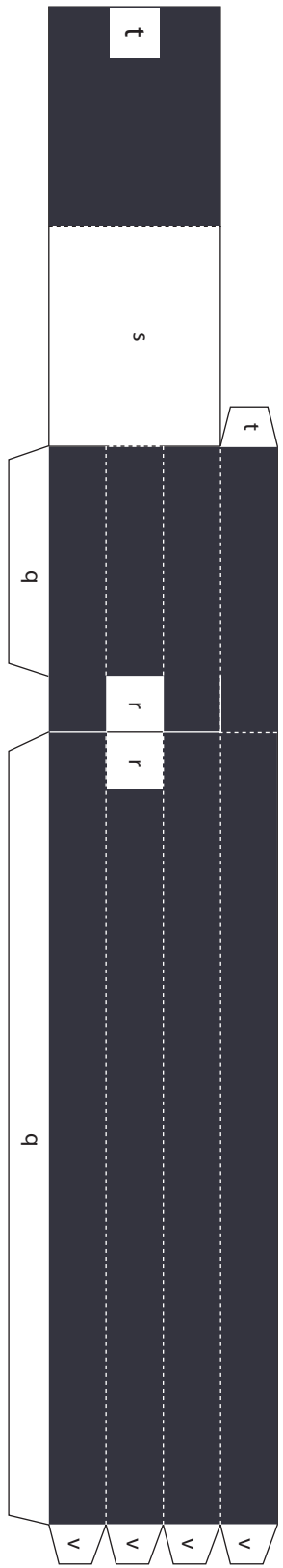
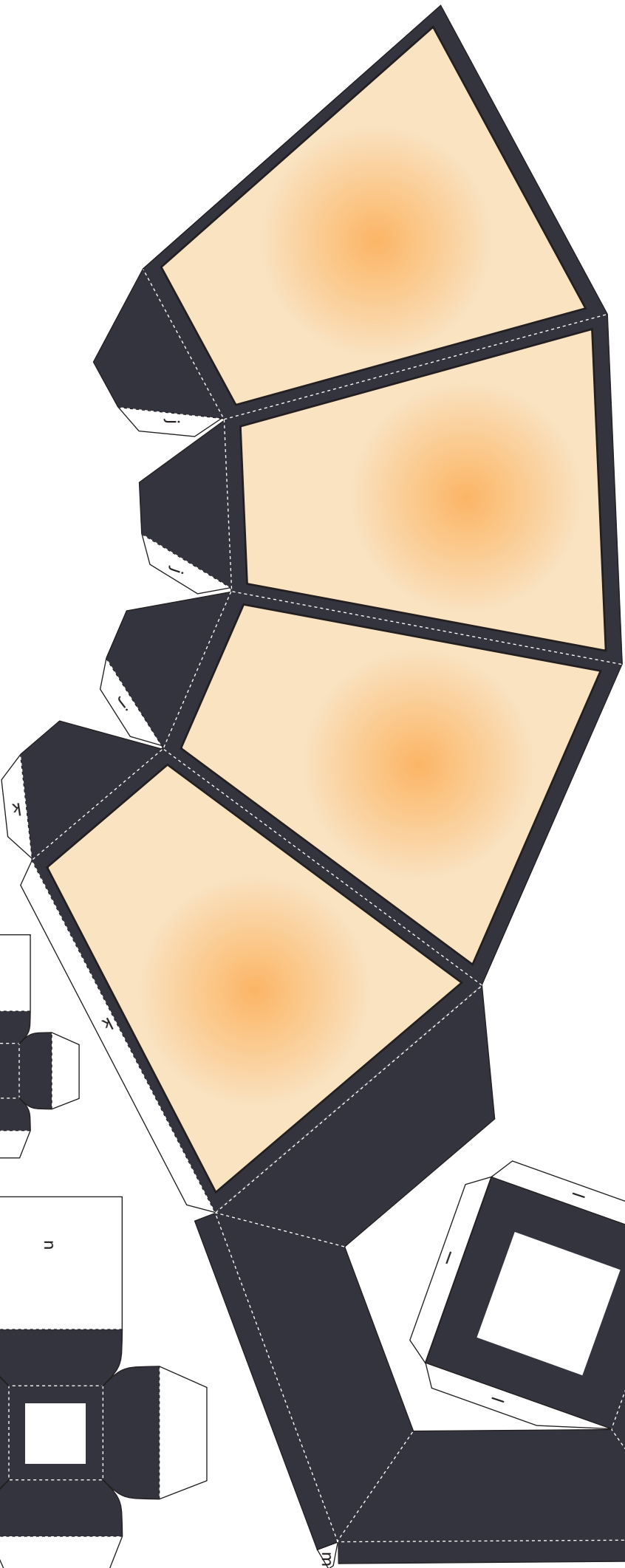
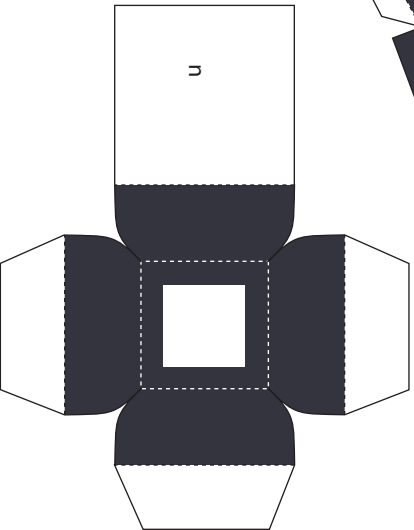
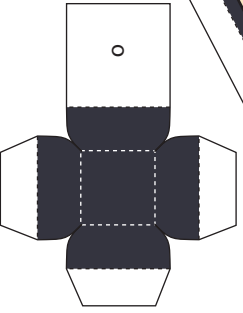
g



h



25A



w

