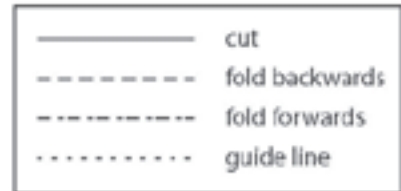


You will need:
Craft knife & ruler / scissors
Glue (eg UHU)



Instructions for KILNS

Score or crease all fold lines before glueing.

Kiln 1 (the big one!)

1. Make a cylinder using [a], folding the tabs at the bottom slightly outwards.
2. Glue the decorative bricks[b] around cylinder[a], about 5mm from the top.
3. Fit the circle[c] inside cylinder[a], about 3mm down from the top.
4. Form [d] into a cone.
5. Glue the outside of the tabs of cylinder[a] then push up through cone[d] and stick.
6. Glue the door[e] onto the back of [f], so the door fills the doorframe.
7. Form [f] into a cylinder, with the tabs at the bottom folded in.
8. Apply glue to the top tabs of cylinder[f] and stick to cone[d].
9. Cut out [g] (cutting out the middle hole too) and glue to the bottom of the kiln[f].
10. Glue the bird shadow[h] onto the kiln.

Kiln 2 (the wee one!)

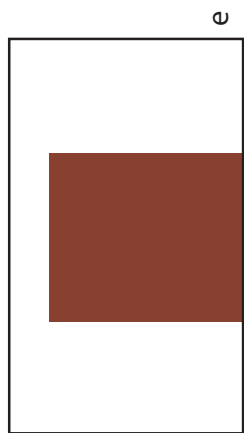
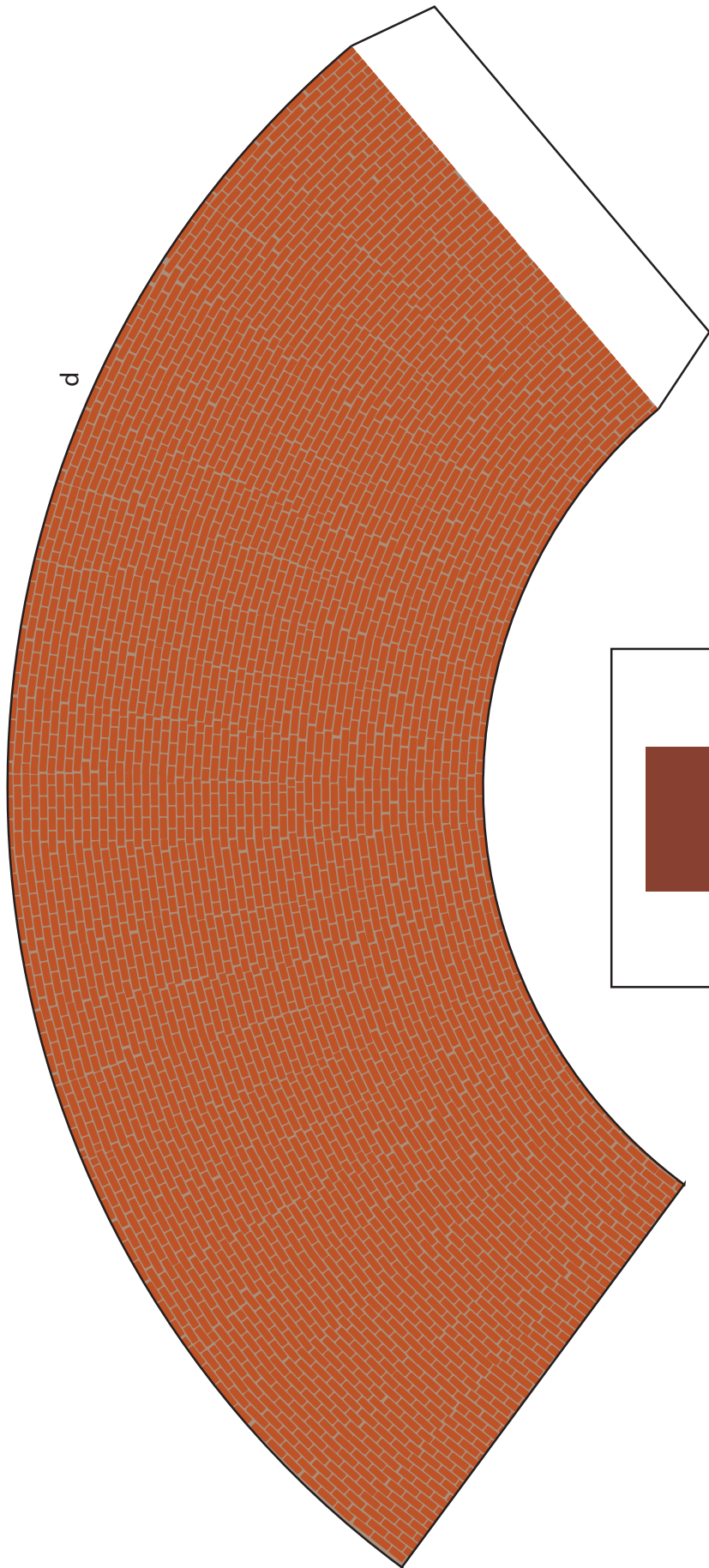
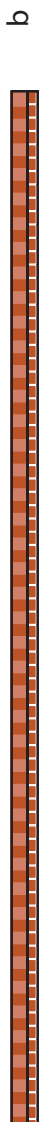
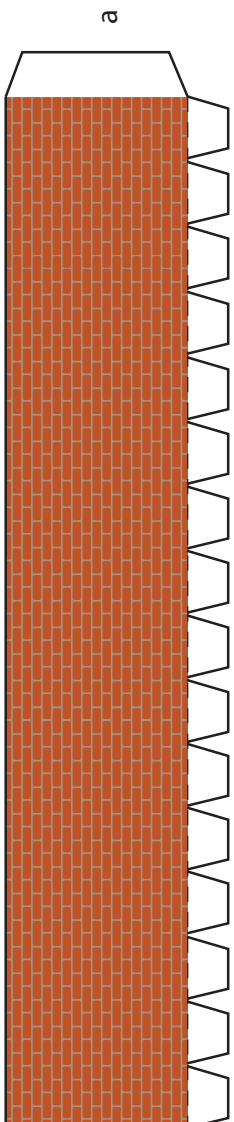
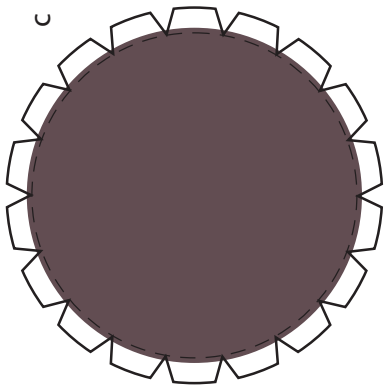
11. Form [i] into a cylinder with the pattern on the inside (so the tabs stick outwards - as in image 1).
12. Glue the door[j] onto the wall[k].
13. Apply glue to the outside of tabs on wall[i]. Wrap wall[k] around, so it creates the outer layer of the kiln.
14. Roll [m] lengthways into a narrow stick. This is the telegraph pole - stick to the wee kiln[k].
15. Glue the wee kiln to the big kiln as indicated.

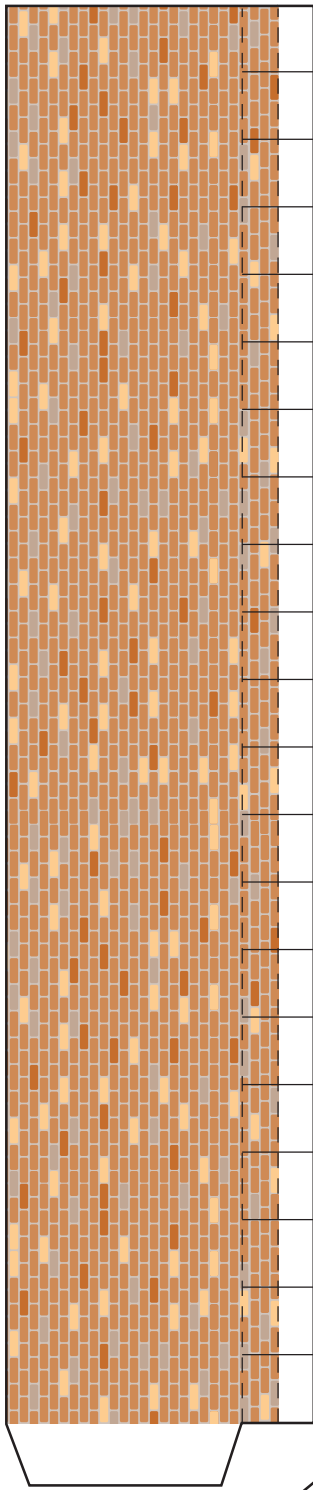
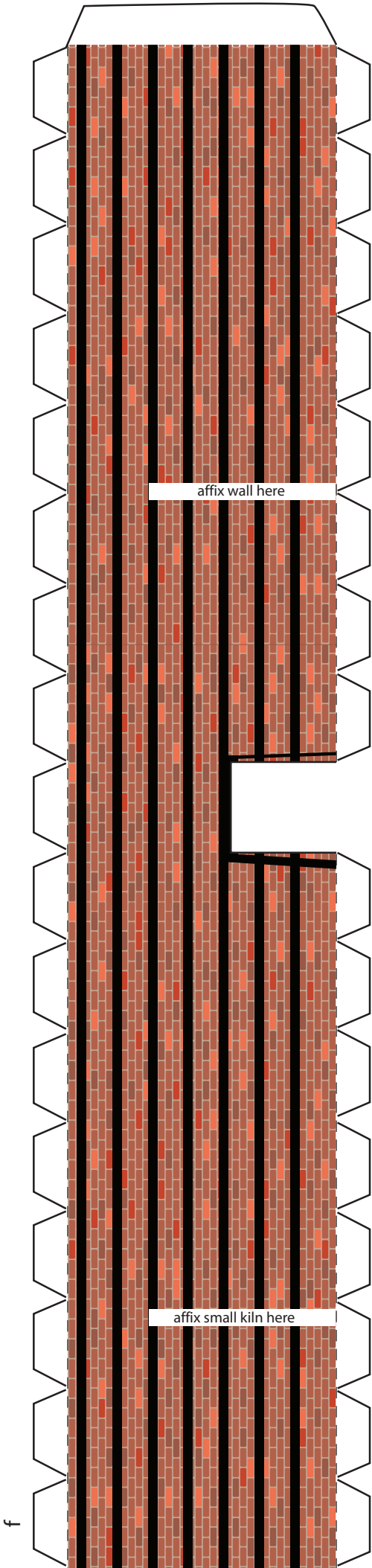


image 1

And lastly...

16. The final piece [n] makes the wall. Each tabs folds twice, then the wall folds together.
17. Glue the end of the wall to the big kiln as indicated.





i

